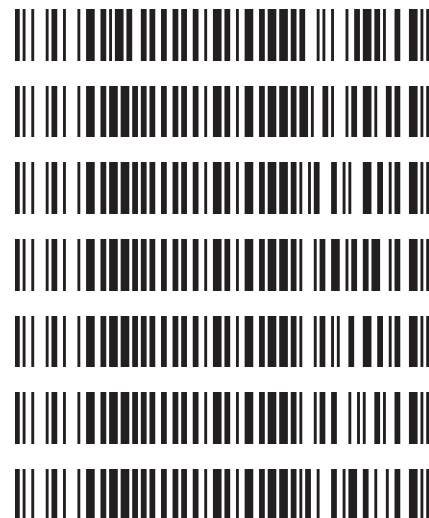


Worklist: 3535

<u>LAB_CASE</u>	<u>ITEM</u>	<u>TASK_ID</u>	<u>DESCRIPTION</u>
M2019-3023	3	156972	AM 3 Urine Carboxy-THC
P2019-1895	1	156974	AM 3 Urine Carboxy-THC
P2019-1928	1	156976	AM 3 Urine Carboxy-THC
P2019-1930	1	156977	AM 3 Urine Carboxy-THC
P2019-1931	1	156979	AM 3 Urine Carboxy-THC
P2019-1945	1	156980	AM 3 Urine Carboxy-THC
P2019-1960	1	156981	AM 3 Urine Carboxy-THC



Data Path : G:\TOX\Pocatello\MMS\CDS\2019\am 2 worklist 3533\
Data File : MJ-THC-NC.D
Acq On : 12 Jul 2019 16:35
Operator : ISP\datastor
Sample : Negative Control
Misc : Lot # POC031319; AM #3 Worklist 3535
ALS Vial : 31 Sample Multiplier: 1

Integration Parameters: events.e
Integrator: ChemStation

Method : C:\gcms\1\methods\TOX.M
Title :

Signal : EIC Ion 371.00 (370.70 to 371.70): MJ-THC-NC.D\data.ms

peak #	R.T. min	first scan	max scan	last scan	PK TY	peak height	corr. area	corr. % max.	% of total
1	5.383	87	104	112	BV	880	10892	100.00%	100.000%

Sum of corrected areas: 10892

Signal : EIC Ion 473.00 (472.70 to 473.70): MJ-THC-NC.D\data.ms

peak #	R.T. min	first scan	max scan	last scan	PK TY	peak height	corr. area	corr. % max.	% of total
1	6.949	625	648	676	BB	2899	62770	100.00%	100.000%

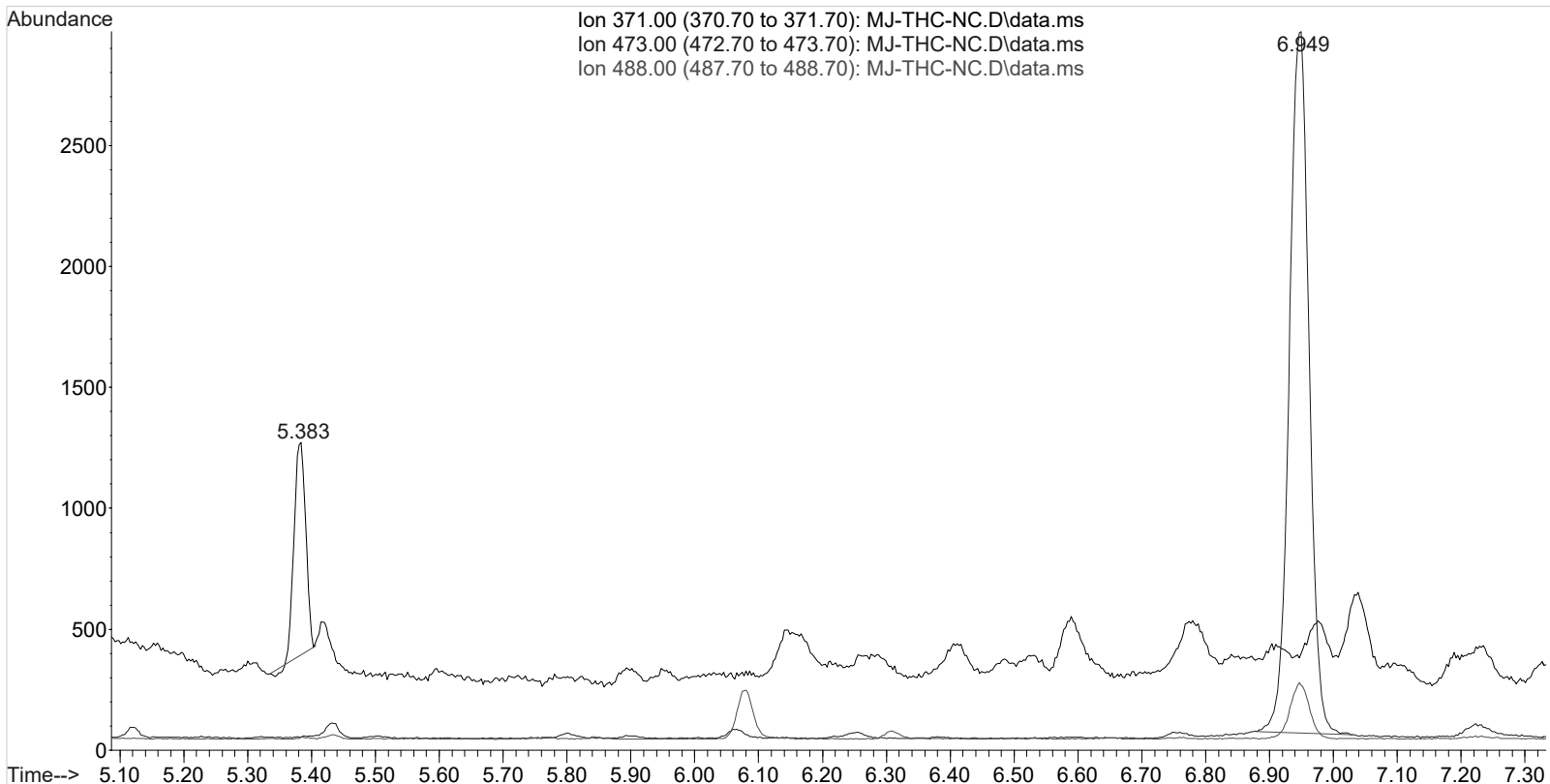
Sum of corrected areas: 62770

Signal : EIC Ion 488.00 (487.70 to 488.70): MJ-THC-NC.D\data.ms

peak #	R.T. min	first scan	max scan	last scan	PK TY	peak height	corr. area	corr. % max.	% of total
--------	----------	------------	----------	-----------	-------	-------------	------------	--------------	------------

No peaks were detected using the method integration parameters!

TOX.M Mon Jul 15 09:41:11 2019



Area Percent Report

9

Data Path : G:\TOX\Pocatello\MMS\CDS\2019\am 2 worklist 3533\
Data File : MJ-THC-PC1.D
Acq On : 12 Jul 2019 16:46
Operator : ISP\datastor
Sample : Spiked Positive c-THC Control
Misc : c-THC lot # 0497429 in Negative Lot # POC031319; Worklist 3535
ALS Vial : 32 Sample Multiplier: 1

Integration Parameters: events.e
Integrator: ChemStation

Method : C:\gcms\1\methods\TOX.M
Title :

Signal : EIC Ion 371.00 (370.70 to 371.70): MJ-THC-PC1.D\data.ms

peak #	R.T. min	first scan	max scan	last scan	PK TY	peak height	corr. area	corr. % max.	% of total
1	6.206	357	390	412	BB	9818	172395	100.00%	100.000%

Sum of corrected areas: 172395

Signal : EIC Ion 473.00 (472.70 to 473.70): MJ-THC-PC1.D\data.ms

peak #	R.T. min	first scan	max scan	last scan	PK TY	peak height	corr. area	corr. % max.	% of total
1	6.207	374	390	410	BB	3647	62993	100.00%	51.134%
2	6.947	625	647	669	BB	2891	60200	95.57%	48.866%

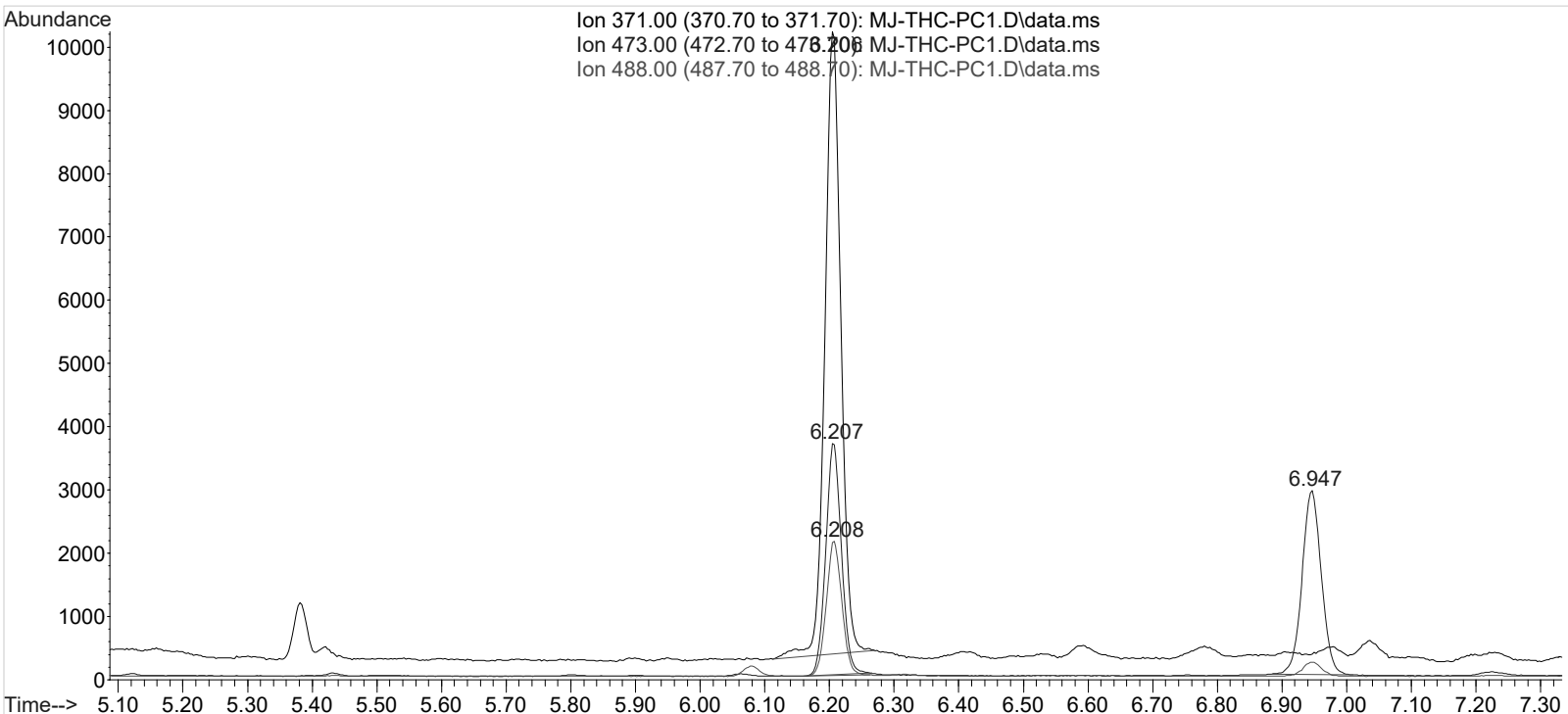
Sum of corrected areas: 123193

Signal : EIC Ion 488.00 (487.70 to 488.70): MJ-THC-PC1.D\data.ms

peak #	R.T. min	first scan	max scan	last scan	PK TY	peak height	corr. area	corr. % max.	% of total
1	6.208	374	390	409	BB	2119	36487	100.00%	100.000%

Sum of corrected areas: 36487

TOX.M Mon Jul 15 09:30:27 2019



Data Path : G:\TOX\Pocatello\MMS\CDS\2019\am 2 worklist 3533\
Data File : MJ-THC-PC2.D
Acq On : 13 Jul 2019 14:09
Operator : ISP\Datastor
Sample : Spiked Positive c-THC Control
Misc : c-THC lot # 0497429 in Negative Lot # POC031319; Worklist 3535
ALS Vial : 32 Sample Multiplier: 1

Integration Parameters: events.e
Integrator: ChemStation

Method : C:\gcms\1\methods\TOX.M
Title :

Signal : EIC Ion 371.00 (370.70 to 371.70): MJ-THC-PC2.D\data.ms

peak #	R.T. min	first scan	max scan	last scan	PK TY	peak height	corr. area	corr. % max.	% of total
1	5.383	88	104	113	BV	872	11043	5.35%	5.075%
2	6.207	374	390	435	VV	11561	206575	100.00%	94.925%

Sum of corrected areas: 217618
Signal : EIC Ion 473.00 (472.70 to 473.70): MJ-THC-PC2.D\data.ms

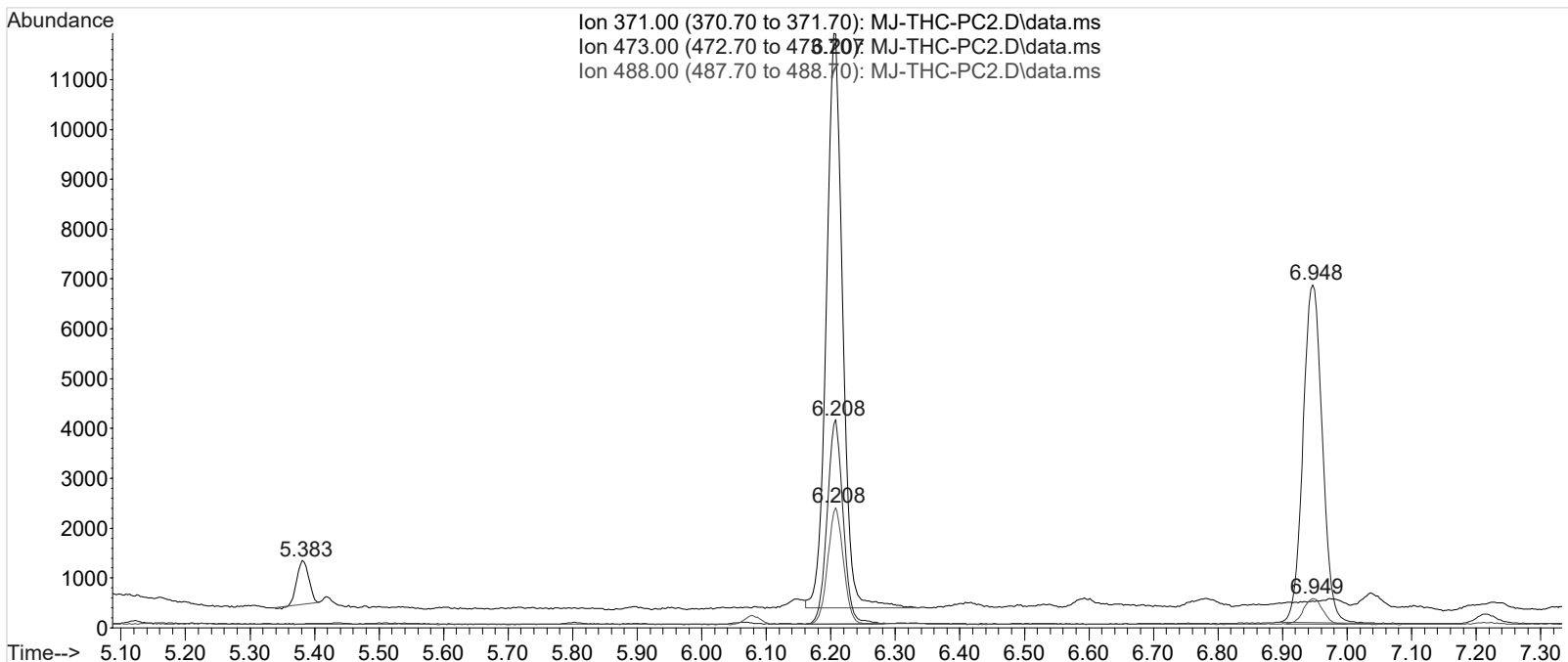
peak #	R.T. min	first scan	max scan	last scan	PK TY	peak height	corr. area	corr. % max.	% of total
1	6.208	374	390	419	BB	4076	71647	50.57%	33.586%
2	6.948	629	647	682	BB	6762	141675	100.00%	66.414%

Sum of corrected areas: 213322
Signal : EIC Ion 488.00 (487.70 to 488.70): MJ-THC-PC2.D\data.ms

peak #	R.T. min	first scan	max scan	last scan	PK TY	peak height	corr. area	corr. % max.	% of total
1	6.208	374	390	413	BB	2324	40227	100.00%	79.248%
2	6.949	633	648	665	BB	510	10534	26.19%	20.752%

Sum of corrected areas: 50761

TOX.M Mon Jul 15 09:33:10 2019



Data Path : G:\TOX\Pocatello\MMS\CDS\2019\am 2 worklist 3533\
Data File : MJ-THC-C3.D
Acq On : 12 Jul 2019 17:08
Operator : ISP\datastor
Sample : Biorad C3 Control
Misc : C3 Lot # 68460; Worklist 3535
ALS Vial : 33 Sample Multiplier: 1

Integration Parameters: events.e
Integrator: ChemStation

Method : C:\gcms\1\methods\TOX.M
Title :

Signal : EIC Ion 371.00 (370.70 to 371.70): MJ-THC-C3.D\data.ms

peak #	R.T. min	first scan	max scan	last scan	PK TY	peak height	corr. area	corr. % max.	% of total
1	5.374	83	101	109	BV	811	9742	6.32%	5.948%
2	6.196	343	386	431	BB	8240	154037	100.00%	94.052%

Sum of corrected areas: 163779
Signal : EIC Ion 473.00 (472.70 to 473.70): MJ-THC-C3.D\data.ms

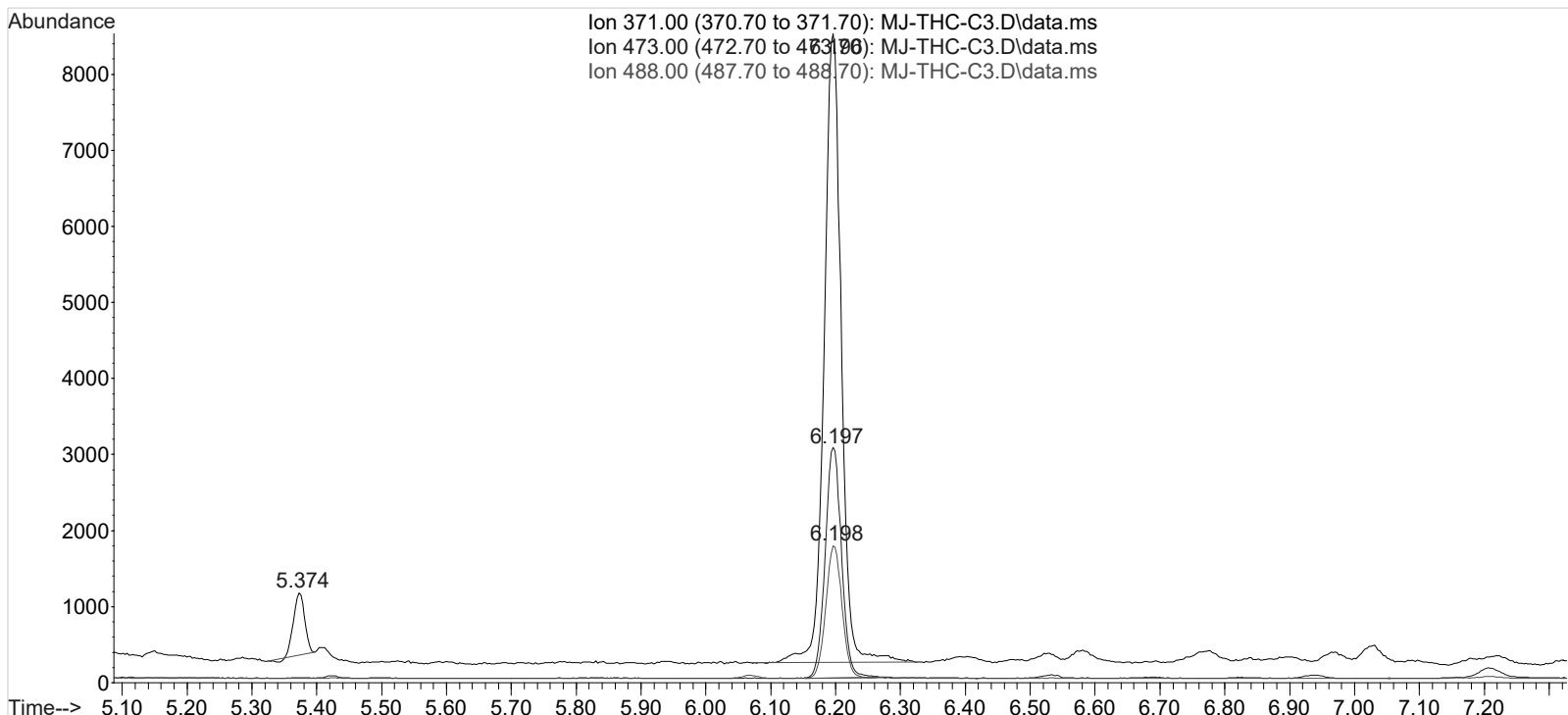
peak #	R.T. min	first scan	max scan	last scan	PK TY	peak height	corr. area	corr. % max.	% of total
1	6.197	371	386	414	BB	3020	53787	100.00%	100.000%

Sum of corrected areas: 53787
Signal : EIC Ion 488.00 (487.70 to 488.70): MJ-THC-C3.D\data.ms

peak #	R.T. min	first scan	max scan	last scan	PK TY	peak height	corr. area	corr. % max.	% of total
1	6.198	372	387	409	BB	1734	30858	100.00%	100.000%

Sum of corrected areas: 30858

TOX.M Mon Jul 15 09:35:56 2019



CS

AM 3 carboxy-THC Calculations Sheet

Run Date: 7/12/2019

Worklist #: 3535

Laboratory Case #: BioRad C3 Lot 68460

Case Calculations:

EIC Ion 371 Corr. Area: 154037

EIC Ion 473 Corr. Area: 53787

473:371 Ratio: 0.349

488:371 Ratio: 0.200

EIC Ion 488 Corr. Area: 30858

Quality Control Calculations:

1st Control

2nd Control

EIC Ion 371 Corr. Area: 172395

206575

EIC Ion 473 Corr. Area: 62993

71647

EIC Ion 488 Corr. Area: 36487

40227

Ratio of 473:371: 0.365

0.347

Average: 0.356

Ratio of 488:371: 0.212

0.195

Average: 0.203

Acceptable Retention Time Range: 6.107

to 6.306

Approximate Minimum Corrected Area of 371 Ion: 34479

Acceptable 473:371 Ratio Range: 0.285

to 0.427

Acceptable 488:371 Ratio Range: 0.163

to 0.244